



台灣表面黏著科技股份有限公司
Taiwan Surface Mounting Technology Corp.

Mounting On Success

Corporation Presentation

2020 Dec



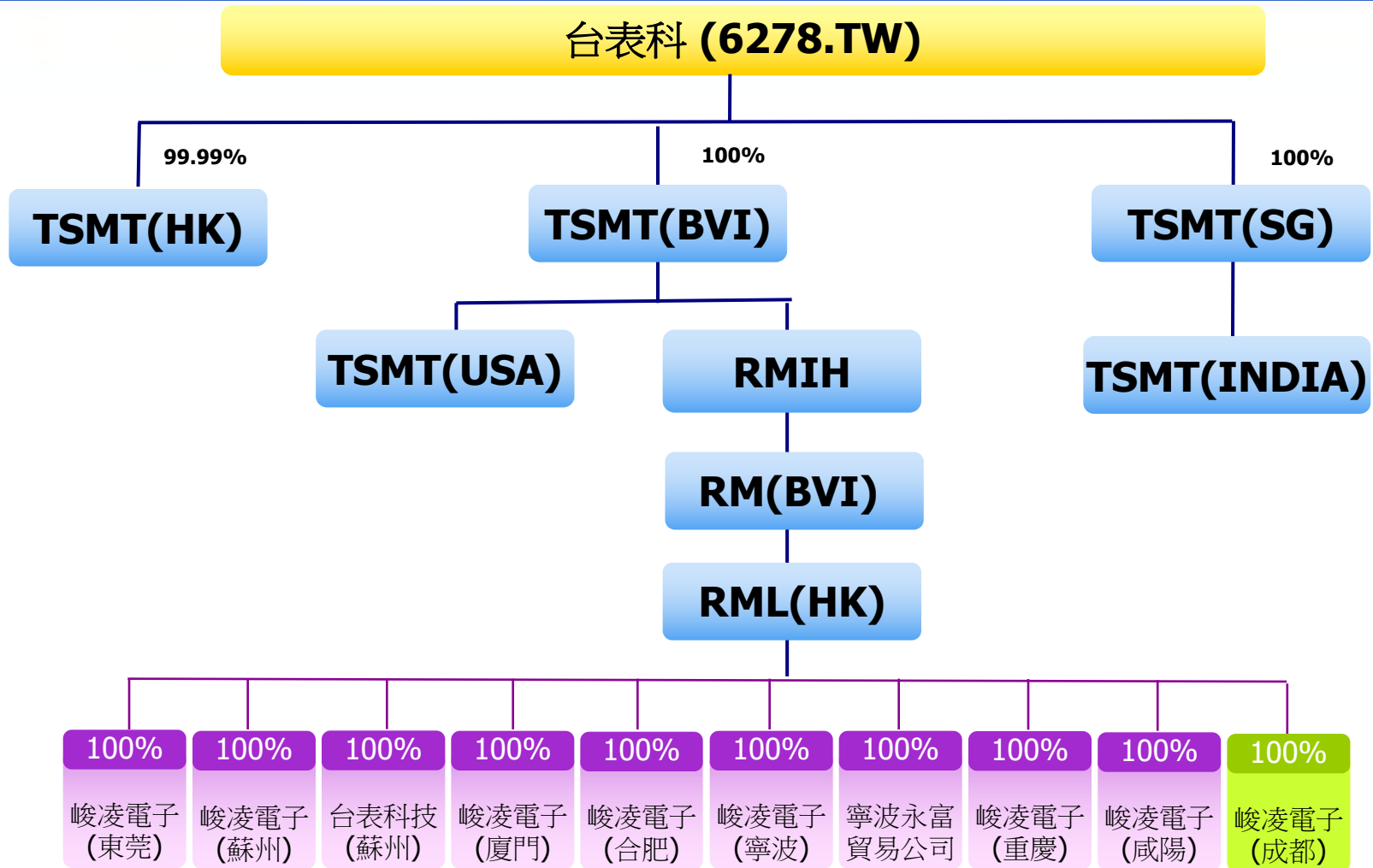
Basic Profile



TSMT in Brief

- Founded : in 1990
- HQ : No.437, Taoying Rd., Taoyuan City, Taiwan
- Capital : \$USD 100M
- Revenue:\$USD 1.23B(2019); \$USD 1.02B(2018)
- Listed:6278.TW
- Capacity : 200 SMT lines, 9 Factories (Taiwan ,China & India)
- Web-Site: <http://www.tsmt.com.tw>

TSMT Group Structure



EMS Business Model

_to Provide professional TQMDC



Manufacturing Platform-in Asia

Strategic Co-location with Main Customers



Xian Yang



Set up on
2018 Jul.

He Fei



Set up on
2010 Jan.

Su Zhou



Set up on
1999 Aug.

Chong Qing



Set up on
2010 Aug.

Xia Men



Set up on
2006 May.

Taiwan



Set up on
1990 Mar.

Ning Bo



Set up on
2006 Feb.

Dong Guan



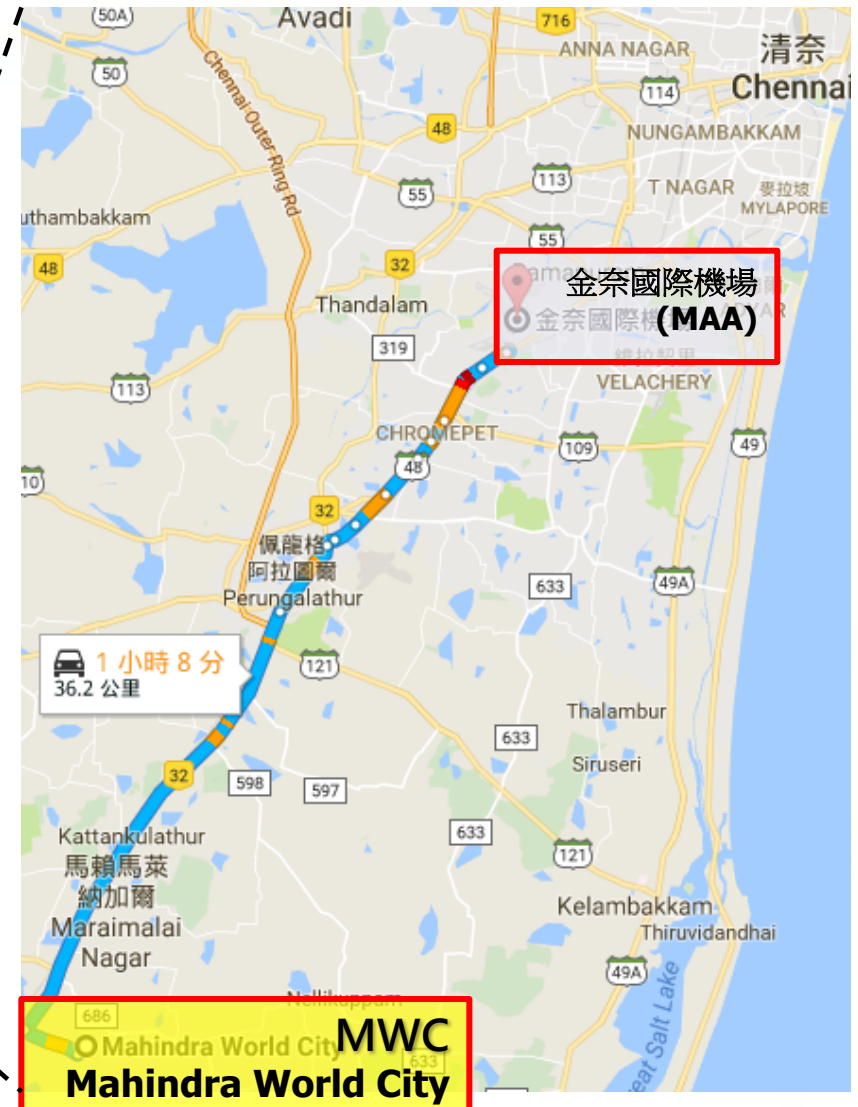
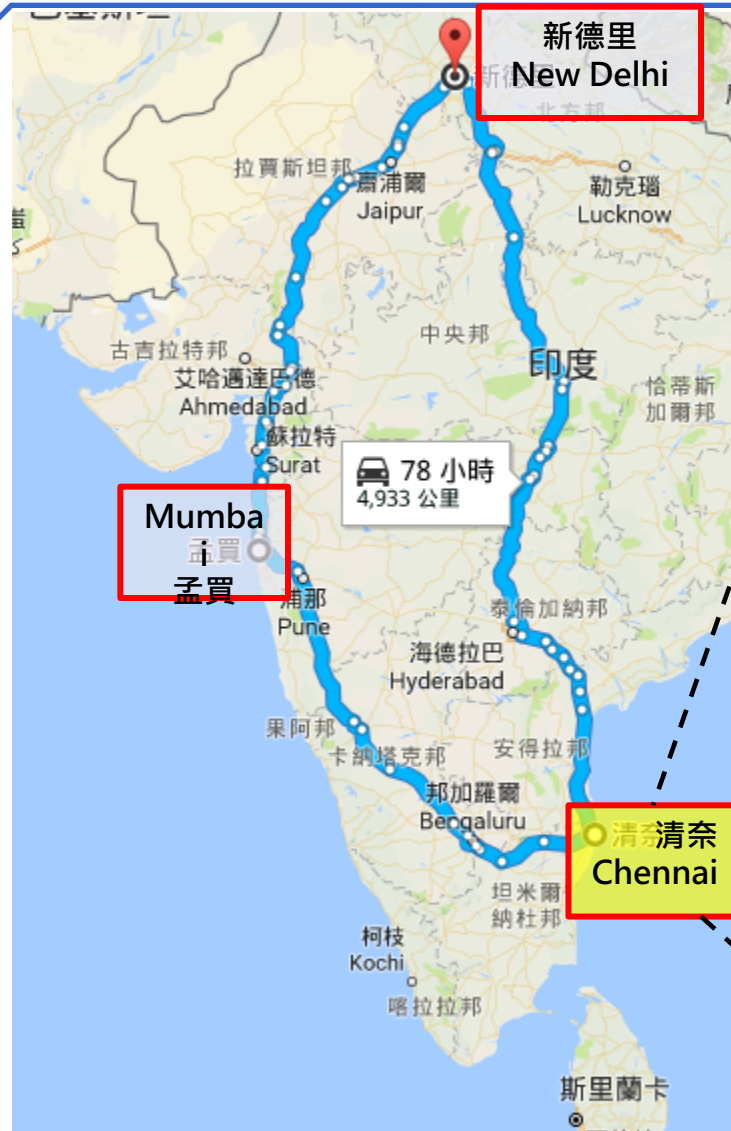
Set up on
1997



- All plants are inter-connected through central ERP system
- Advantages of co-location include timely delivery and cost efficiency

Results in stronger relationships with customers, operating efficiency & capture more business opportunities

Manufacturing Platform-in India



TSMT Technology (India) Chennai Factory



The TSMT Chennai Manufacturing Facility is located in Zone of Domestic Tariff Area (DTA), Mahindra World City (MWC), India's first integrated business city.

Set up on 2017,Q4.
Have 8 SMT lines on 2019.



Production Capacity & Capability SMT



capacity (SMT Lines)

生產基地	2016	2017	2018	2019	2020
東莞DG	20	15	11	12	12
蘇州SZ	65	66	75	75	75
寧波NB	19	12	13	13	15
廈門XM	25	15	12	12	12
台灣TW	17	17	20	20	26
合肥HF	4	8	10	12	14
重慶CQ	15	15	16	20	23
咸陽XY	-	-	4	8	9
India	-	2	5	8	8
總數	165	150	166	180	194

 Economies of scale further strengthen competitiveness of TSMT

Financial Highlights-2019 Annual Results



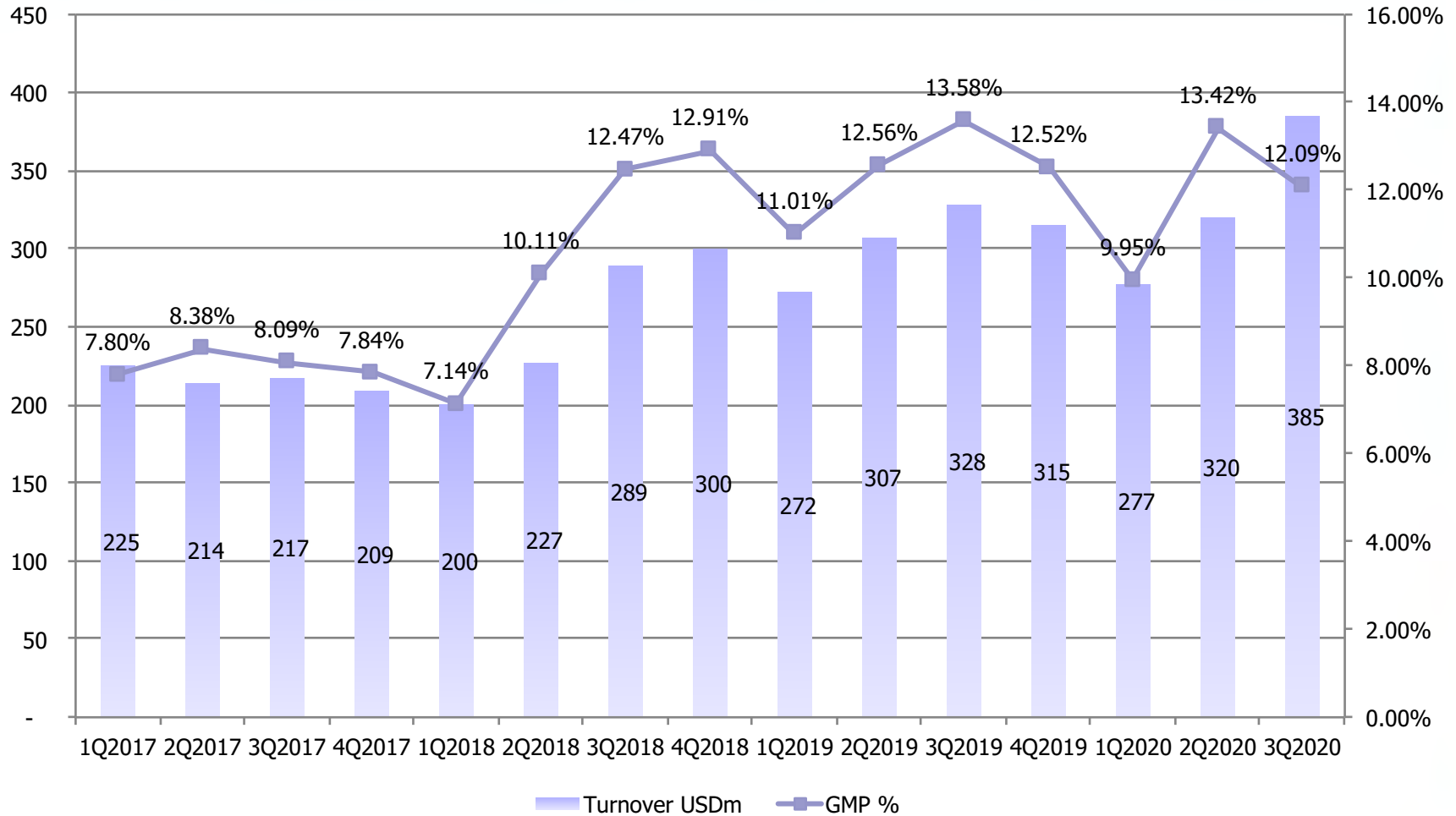
(NTD'000)	2019	2018	Change
Revenue	37,906,373	30,634,088	23.74%
Gross profit	4,729,725	3,377,798	40.02%
Operating profit	2,590,921	1,556,759	66.43%
Net profit	2,035,222	785,003	159.26%
Gross profit margin	12.48%	11.03%	1.45pp
Operating profit margin	6.84%	5.08%	1.76pp
Net profit margin	5.37%	2.56%	2.81pp
Basic EPS (NTD)	6.96	2.68	159.70%

Financial Highlights-2020 Q3 Results



(NTD'000)	2020 Q3	2019 Q3	Change
Revenue	29,417,352	28,178,768	4.40%
Gross profit	3,505,416	3,511,938	-0.19%
Operating profit	1,800,885	1,962,431	-8.23%
Net profit	1,453,867	1,409,585	3.14%
Gross profit margin	11.92%	12.46%	-0.54pp
Operating profit margin	6.12%	6.96%	-0.84pp
Net profit margin	4.94%	5.00%	-0.06pp
Basic EPS (NTD)	4.97	4.82	3.11%

Turnover & Margin Analysis



Financial Position



(NTD'000)	As at 31 Dec 2019	As at 31 Dec 2018	Change
	(audited)	(audited)	
Total assets	33,166,414	29,687,036	11.72%
Net assets	12,731,889	11,581,141	9.94%
Total borrowings	3,805,530	3,786,517	0.50%
Cash and bank balances	7,156,505	5,635,012	27.00%
Total equity	12,731,889	11,581,141	9.94%
Gearing Ratio*	29.89%	32.70%	-
Inventory turnover days	34 days	35 days	-1 days
A/R turnover days	122 days	130 days	-8 days
A/P turnover days	128 days	123 days	+5 days

*Gearing Ratio=Total Borrowings(other than payables in ordinary course of business) over total equity

Financial Position



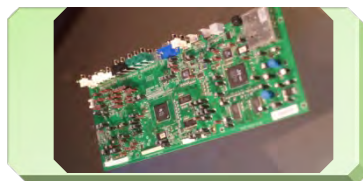
(NTD'000)	As at 30 Sep 2020 (reviewed)	As at 30 Sep 2019 (reviewed)	Change
Total assets	34,315,284	33,023,498	3.91%
Net assets	12,978,821	12,647,538	2.62%
Total borrowings	5,323,009	3,777,580	40.91%
Cash and bank balances	7,187,293	7,484,847	-3.98%
Total equity	12,978,821	12,647,538	2.62%
Gearing Ration*	41.01%	29.87%	-
Inventory turnover days	32 days	33 days	-1 days
A/R turnover days	116 days	121 days	-5 days
A/P turnover days	131 days	128 days	+3 days

*Gearing Ration=Total Borrowings(other than payables in ordinary course of business) over total equity

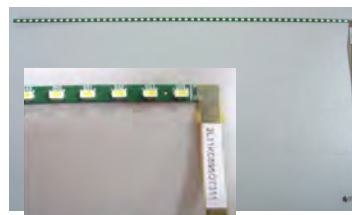
Finished products - applications



Control Board 控制板 (Panel driver 面板)



LED Light Bar 光棒 (back light driver 背光)



Touch Controller IC Board



Year of launch:	Since 2000	Since 2007	Since JULY 2012
Proportion to revenue(2020/3Q):	44%	22%	11%
Monthly output:	About 18m pcs	About 15m pcs	About 6m pcs
Consumer products revenue (2020/3Q):			



TV

60%

17%

0%



Notebook/Tablet

16%

75%

35%



Monitor

22%

4%

1%



Small-sized
Product

2%

4% (since 2015)

64%



台灣表面黏著科技股份有限公司
Taiwan Surface Mounting Technology Corp.

Thanks
謝謝指導

